



Pine Grove
POP 2,100 ELEV 2,499

State Route 88 Pine Grove Corridor Improvement Project

PERFORMANCE MEASURES | Alleviate Congestion

PERFORMANCE MEASURE	CONSTRUCTION YEAR 2024		DESIGN YEAR 2044	
	No Project	With Project	No Project	With Project
Delay (Seconds) Level of Service	29 (C)	24 (C) (-17%)	62 (E)	36 (D) (-42%)
Vehicle Hours of Delay (Hours)	21.6	13.6 (-37%)	51	40 (-22%)
Vehicle Hours Traveled (Hours)	250	245 (-2%)	474	393 (-17%)
Emissions (Tons)	2.54	2.44 (-4%)	3.53	3.34 (-5%)
Speed (MPH)	39	41 (+5%)	28	30 (+7.1)



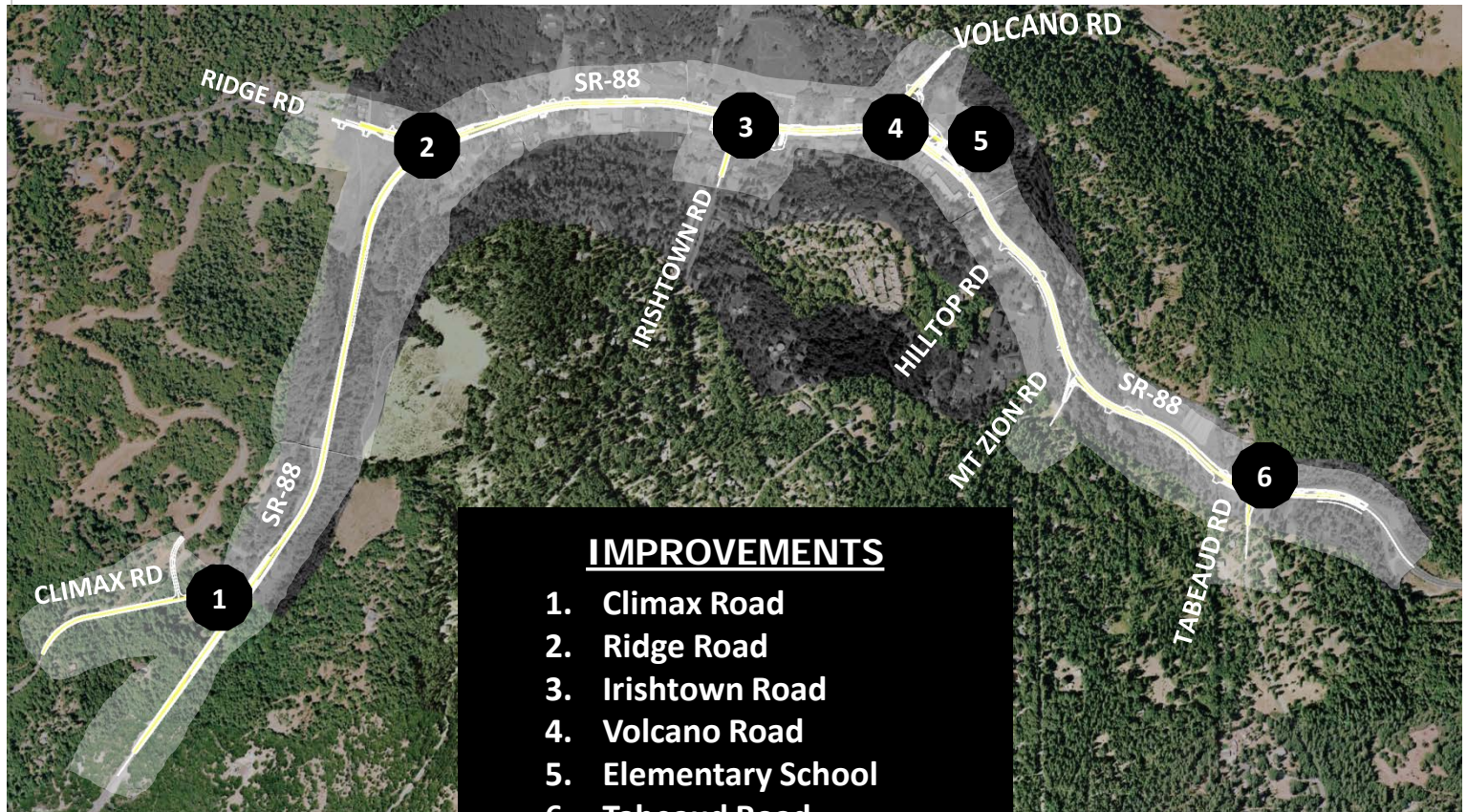


State Route 88 Pine Grove Corridor Improvement Project

Pine Grove

POP 2,100 ELEV 2,499

PERFORMANCE MEASURES | Alleviate Congestion



IMPROVEMENTS

1. Climax Road
2. Ridge Road
3. Irishtown Road
4. Volcano Road
5. Elementary School
6. Tabeaud Road





Pine Grove
POP 2,108 ELEV 2,499

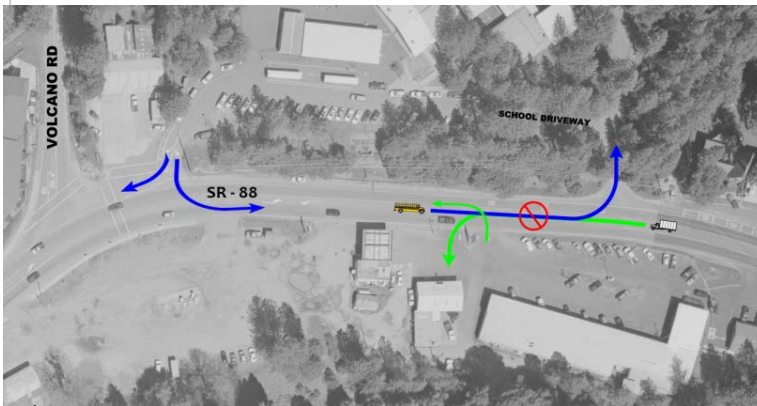
State Route 88 Pine Grove Corridor Improvement Project

PERFORMANCE MEASURES | Improve Operations

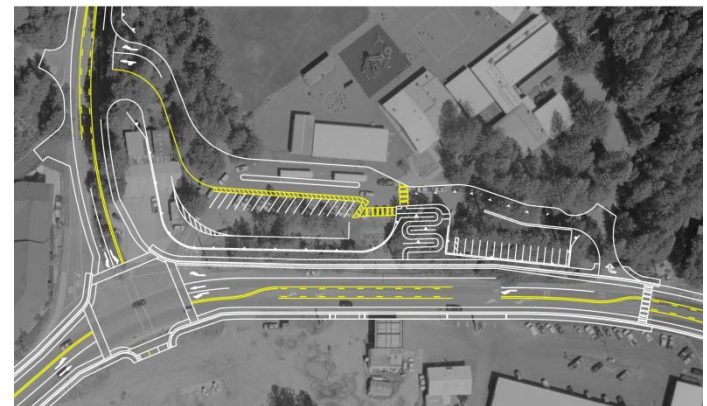
PERFORMANCE MEASURE	IMPROVEMENT	WITH PROJECT REDUCTION IN DELAY (SECONDS)
Delay (Seconds)	Pine Grove Elementary School Ingress & Egress	10
	New Traffic Signals at Irishtown Rd, Volcano Rd and Tabeaud Rd	7
	Passing Lanes at Climax Rd and Tabeaud Rd	3
	Turn Pockets at Climax Rd, Irishtown Rd, Volcano Rd and Tabeaud Rd	3
	Shoulders along entire corridor	3

TOTAL: 26 Seconds

BEFORE



AFTER



SR-88 Pine Grove-Volcano Road Intersection



State Route 88 Pine Grove Corridor Improvement Project

Pine Grove
POP 2,108 ELEV 2,499

PERFORMANCE MEASURES | Improve Operations

