

F.A. Amador Crop Report file

1960 AMADOR COUNTY

ANNUAL CROP AND LIVESTOCK REPORT

Agricultural Commissioner

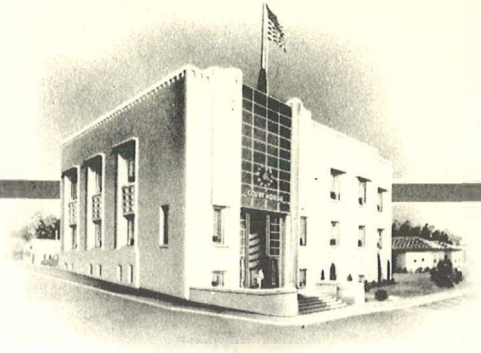
P. O. Box 74

Jackson, California

AMADOR COUNTY

LELAND BROWN
Agricultural Commissioner
County Sealer Weights and Measures
Phone Jackson 787
P. O. Box 74

JACKSON, CALIFORNIA



March 21, 1961

The Honorable Charles Paul, Director
State Department of Agriculture
and
The Honorable Board of Supervisors of
Amador County

Gentlemen:

The enclosed report is a compilation of the estimated acreage, production and value of agricultural products in Amador County for 1960 as required by Section 65.5 of the Agricultural Code.

The values shown represent gross income and are not intended to reflect net income to the growers.

The 1960 value of agricultural production was \$2,606,150, which represents a decrease of \$168,195 below the 1959 values. Fewer cattle at lower prices resulted in a decrease of \$150,339, and 61,150 fewer poultry fryers marketed reduced the gross income to poultrymen by \$31,256. Field crops produced more income during 1960 with an increase in gross value of \$32,650 above 1959.

I wish to thank the many individuals who cooperated in making this report possible.

Respectfully submitted,

Leland Brown
Leland Brown
Agricultural Commissioner

LB:dt

GENERAL INFORMATION

Amador County is located on the eastern slope of the Sacramento Valley in the Sierra foothills; it ranges from an elevation of 200 feet at Ione to 8,500 feet at Carson Pass. Its rolling hills are primarily used for the production of lumber and cattle. The Shenandoah Valley produces much of the sheep, grapes, and deciduous tree crops, wine and some field crops. The balance of the field crops and nearly all of the milk are produced in the Ione and Jackson Valley areas.

The newly-formed Pardee Reservoir Recreation area in addition to the famed clay, silica sand and lignite deposits are located in the Ione area. Progressing up the foothills, one encounters the historic "Mother Lode Country" on which are located the towns of Jackson, Sutter Creek, Amador City, Drytown, Plymouth and Fiddletown. This area is known for its history as one of the richest gold-producing spots in the world.

In the higher elevations, one finds picturesque beauty, the ghost town of Volcano, and the desirable retirement areas of River Pines, Pine Grove, and Pioneer. The "high country" with its abundance of lakes and streams, lends itself to excellent summer and winter sports.

The livelihood of the county from the standpoint of employment is derived from the following classifications of work: Public work (Federal, State and County employment), lumbering, agriculture, hydroelectric power, manufacturing, mining and small businesses.

STATISTICAL INFORMATION

Land area	380,000 acres	Private forests	124,283 acres
Cultivated Crops	5,660 acres	Federal Land	77,170 acres
Pasture & Range	165,000 acres	Farms	263

AMADOR COUNTY
1959-1960

LIVESTOCK AND POULTRY PRODUCTION AND VALUE

Item	Year	Production		Unit	Value	
		No. of Head	Total Liveweight		Per Unit	Total
Cattle & Calves (all)	1960	9,720	60,000	Cwt.	21.20	\$1,272,000
	1959	11,045	62,305	Cwt.	22.83	1,422,339
Calves (beef and dairy)	1960	6,770	30,400	Cwt.	24.00	730,000
	1959	8,225	34,115	Cwt.	27.30	931,339
Other	1960	2,950	29,600	Cwt.	18.30	542,000
	1959	2,820	28,200	Cwt.	17.40	491,000
Chickens (all)	1960	171,300	5,789	Cwt.	16.97	98,260
	1959	228,467	7,848	Cwt.	15.80	124,017
Broilers & Fryers	1960	160,000	5,280	Cwt.	17.00	89,800
	1959	221,150	7,519	Cwt.	16.10	121,056
Hens & Roosters	1960	18,800	846	Cwt.	10.00	8,460
	1959	7,317	329	Cwt.	9.00	2,961
Hogs & Feeders	1960	1,378	1,258	Cwt.	17.00	21,400
	1959	1,247	1,372	Cwt.	15.30	20,992
Sheep & Lambs (All)	1960	5,804	4,858	Cwt.	17.57	85,350
	1959	5,591	4,914	Cwt.	17.46	85,746
Ewes	1960	484	774	Cwt.	3.50	2,710
	1959	510	816	Cwt.	3.12	2,546
Goats (Angora)	1960	960	384	Head	9.00	8,640
	1959	490	196	Head	8.60	4,200
Lambs	1960	4,360	3,700	Cwt.	20.00	74,000
	1959	4,591	3,902	Cwt.	20.25	79,000
Miscellaneous Turkeys, rabbits etc.	1960					8,000
	1959					2,000
TOTALS	1960					\$1,485,010
	1959					1,655,094

AMADOR COUNTY
1959-1960

LIVESTOCK AND POULTRY PRODUCTS: PRODUCTION AND VALUE

Item	Year	Production	Unit	Value	
				Per Unit	Total
Milk, Cow (all)	1960	32,032	Cwt.	\$ 4.25	\$ 136,000
	1959	34,455	Cwt.	4.38	151,000
Market	1960	21,292	Cwt.	4.72	100,000
	1959	24,644	Cwt.	4.80	118,000
Manufacturing	1960	10,740	Cwt.	3.35	36,000
	1959	9,811	Cwt.	3.38	33,000
Eggs, Chicken	1960	424,000	Doz.	.354	150,000
	1959	437,238	Doz.	.337	147,000
Mohair	1960	96	Cwt.	67.20	6,450
	1959	100	Cwt.	75.00	7,500
Wool	1960	408	Cwt.	47.05	19,200
	1959	407	Cwt.	48.90	19,900
TOTALS	1960				\$ 311,650
	1959				325,400

FRUIT AND NUT CROPS: ACREAGE, PRODUCTION AND VALUE

Crop	Year	Bearing Acreage	Productions (tons)		Value	
			Per Acre	Total	Per Ton	Total
Apples	1960	34	.29	9.9	\$160.	\$ 1,580
	1959	28	1.5	42	100.	4,200
Grapes, wine	1960	572	1.7	972	75.	72,900
	1959	644	1.8	1159	76.	88,100
Peaches (dried)	1960	10	.29	2.9	360.	1,040
	1959	not listed				
Prunes	1960	105	.65	68.3	340.	23,200
	1959	128	.48	61.4	310.	19,000
Walnuts	1960	221	.27	59.7	490.	29,300
	1959	202	.44	88.1	430.	37,900
Miscellaneous chestnuts, olives, filberts, etc.	1960	44				10,400
	1959	49				11,460
TOTALS	1960	986				\$138,420
	1959	1,051				160,660

AMADOR COUNTY
1959-1960

FIELD CROPS: ACREAGE, PRODUCTION AND VALUE

Crop	Year	Harvested Acreage	Production		Unit	Value	
			Per Acre	Total		Per Unit	Total
Barley	1960	335	1.21	405	Ton	\$39.50	16,000
	1959	320	.92	294	Ton	42.00	12,300
Beans, (dry)	1960	348	.81	282	Ton	149.00	42,000
	1959	213	.69	148	Ton	280.00	41,400
Corn, Silage	1960	108	8.4	907	Ton	7.50	6,800
	1959	98	7.9	774	Ton	7.50	5,800
Hay, Alfalfa	1960	387	3.4	1,320	Ton	24.00	31,700
	1959	410	3.1	1,270	Ton	24.80	31,500
Hay, Grain	1960	1,150	1.8	2,070	Ton	21.00	43,500
	1959	1,310	1.6	2,100	Ton	21.80	45,800
Hay, Other	1960	769	1.6	1,230	Ton	20.00	24,600
	1959	380	1.2	456	Ton	20.00	9,120
Oats	1960	181	.69	125	Ton	50.60	6,330
	1959	50	.76	38	Ton	46.00	1,750
Pasture, Irrigated	1960	902			Acre	45.70	41,200
	1959	421			Acre	53.00	22,300
Pasture & Range (dry)	1960	165,000			Acre	1.86	307,000
	1959	165,000			Acre	1.89	312,000
Sorghum, Grain	1960	365	1.9	694	Ton	38.80	27,000
	1959	235	1.9	447	Ton	41.00	18,300
Wheat	1960	132	.89	117	Ton	60.00	7,020
	1959	87	1.2	104	Ton	58.00	6,000
TOTALS	1960	169,677					\$553,150
	1959	168,524					520,500

AMADOR COUNTY
 MISCELLANEOUS PRODUCTION AND VALUE
 1959-1960

Item	Year	Acreage	Production	Unit	Value	
					Per Unit	Total
Honey	1960		17,000	Lbs.	.10	\$1,700
	1959		16,000	Lbs.	.10	1,600
Vegetables (Fresh)	1960	44	220	Ton	77.	17,000
	1959	42	141	Ton	87.	12,300
TOTALS	1960					18,700
	1959					\$13,900

RECAPITULATION

Field Crops	169,677 acres	\$ 553,150.
Fruit & Nut Crops	986 acres	138,420.
Livestock & Poultry	71,905 cwt.	1,485,010.
Livestock & Poultry Products...		311,650.
Miscellaneous		18,700.
GRAND TOTAL		\$2,506,930.
1948\$	2,274,698
1949		2,358,153
1950		2,713,765
1951		3,960,864
1952		2,948,328
1953		1,987,049
1954		2,355,499
1955		2,342,185
1956		2,077,141
1957		2,119,784
1958		2,548,917
1959		2,675,125
1960\$	2,506,930